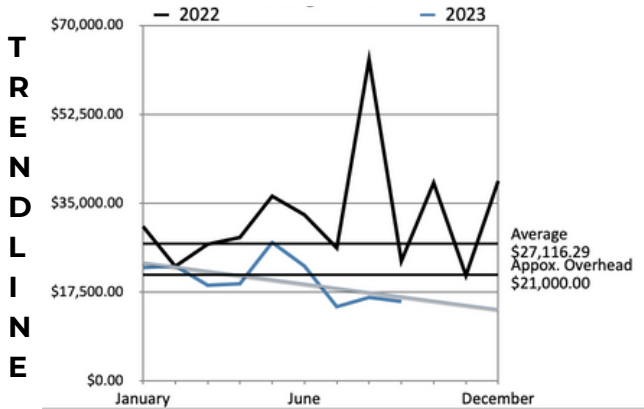


# GENEROSITY REVIEW '22-'23



### Data

The two charts demonstrate giving trends and the challenge to maintain stability. That is, large influxes of cash - while beneficial for ministry expression - do not translate into holistic discipleship toward generosity.

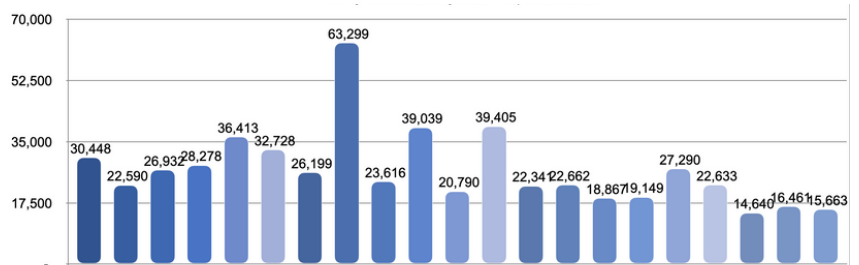
In other words, the church lived beyond her means, carried along by others. The time is now before us to live into generosity.

### Story

Since 2017, God has prepared space for The Lakes Church to grow into a local church eager for gospel refreshment on West Michigan's lakeshore. From our genesis, the generosity of anonymous donors and past benefactors paved the way for Nate and Todd to serve and love this community. That said, the giving needed to support the scope of ministry expression lagged and would regularly be infused from external patrons.

We thank God for his provision. And in this coming season - absent of past benefactors - a new opportunity of stewardship presents itself.

### REVENUE JAN '22 - SEP '23



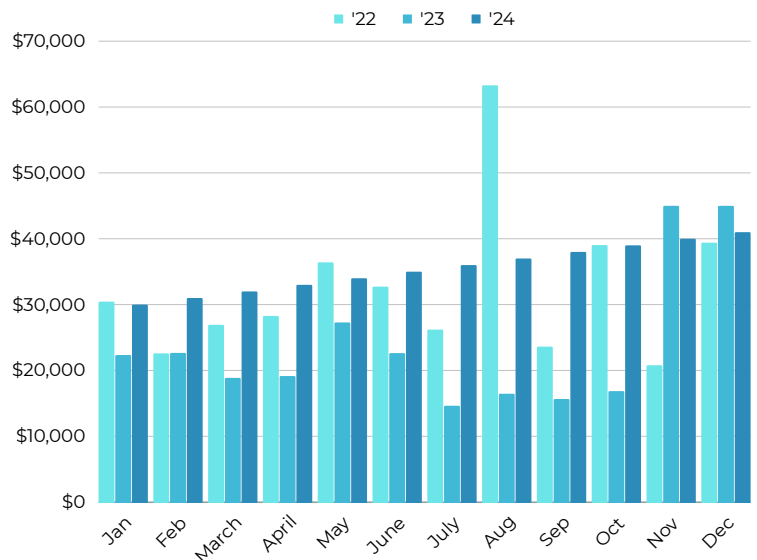
## GENEROSITY FUTURE

***We do not need or want generosity from you; we want it for you.***

### Invitation

We want to become the type of people for whom generosity is the overflow of joy and gratitude. To that end, we ask you to consider prayerfully:

- Establish Security
- Invest in the future, and
- Eradicate Spiritual Loneliness



Year '24 represents the giving required to reach past ('22) annual revenue of 426k. Starting at 30k with a 1k monthly progression, ending at 41k in the Dec '24.

# GENEROSITY ENGAGEMENT

## Establish Security

To close the gap between our operation costs and current giving we need an additional six thousand dollars through year's end.

Over and above closing the gap, we desire to establish security for staff and ministry efforts by raising an additional two months of operations and ministry expenses (valued at 42k).

## Invest in the Future

Students today are in desperate need of the truth of the gospel and the love of the local church. We refuse to allow another generation to be choked out by the riches and concerns of this world; there is a better way - the way of Jesus.

Madison Reynen and Ally Shepherd have built a beautiful foundation. We want to release and empower them for more. Therefore, we're asking you to partner with us financially to this end.

## Eradicate Spiritual Loneliness

52% of Americans (more than 1/2) report feeling lonely this year; this includes you and me - the church.

We have been called to love people with the love of Jesus, who welcomes the outcast, the poor, the sinner, and the lonely. It is our desire to curate intentional discipleship spaces for:

- Cohort Learning (Practicing the Way of Jesus)
- Stage of life discipleship (families, women & men's ministry, etc.)
- Missional Partnership

## Ways to join:

**\$20** (\$5 Weekly)

*Contributes toward Kid's curriculum*

**\$100** (\$25 Weekly)

*Contributes toward a Lakes Student Scholarship*

**\$500** (\$125 Weekly)

*Expands Missional capacity*

**\$800** (\$200 Weekly)

*Supports the day-to-day operations of the church staff and volunteers.*

**\$1500** (\$375 Weekly)

*Invests in discipleship course development and the formation of our community into Christ-likeness.*

**\$4000** (\$1k Weekly)

*Seeds a permanent location for the Lakes church to put down roots and invest in the next generation.*

Other amount